



aguabendita

RESORT 2026



TREASURE HUNTER

RS

26

A Collector of Stories

She's a woman who journeys across Colombia in search of rare treasures—not just to adorn her body, but to carry pieces of this vibrant country with her.

In hidden alleys and bustling markets, she uncovers objects that transform her: spices in a thousand colors, a silver necklace, a rug woven with centuries of history.

Her style is a fusion of cultures, a continuous adventure where the true treasures aren't the objects themselves, but the experiences and stories she gathers along the way.



DELIVERY #1



AMBAR

This collection is a tribute to nature's resilience; its remarkable ability to adapt and transform in the face of extremes. Leaves, flowers, stems, mushrooms, and feathers merge to form new botanical species, even faces.

Rooted in surrealism, it blurs the line between reality and imagination, revealing beauty in the most unexpected places.



LOLITA TOP

19309

Adjustable fit - Handmade strap details
Eco-Fabric Ruched details
Handmade details: 7 hours and 30 minutes
S - M - L - XL

Handmade details Best-seller
Key item ECO fabric



ALEGRIA BOTTOM

19328

Adjustable fit - Ruched details - Strap Tip
Eco-Fabric - Coverage: Latin
S - M - L - XL

Handmade details Best-seller
Key item ECO fabric



Lolita Top - Full embroidery



Alegria Bottom - Ruched Details



CONGA ONE PIECE

19308

Cut-out details - Ring details - Placement print
Eco-Fabric - Adjustable straps - Coverage: Latin
S - M - L - XL

New silhouette ECO fabric



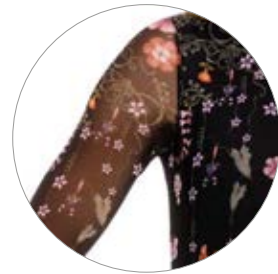
Ring Details



Adjustable Straps



Trim Details



Mesh Details

MEI ONE PIECE

19322

Long sleeves - Back zipper - Mesh details
Placement print - Coverage: American

S - M - L - XL

Best-seller



Fabric Details

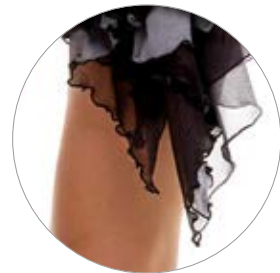
KARLA PAREO

20466

Machine-embroidered fabric
Adjustable fit - See-through - 100% Polyester

S - M - L

New silhouette



Trim Details

MARINE PAREO

19311

See-through - Mesh fabric - Placement print
Trim details - 94% Polyester, 6% Spandex
Measurements: 64.9" x 41.3" (165 cm x 105 cm)

U

Best-seller Key item



Trim Details

LEONA T-SHIRT

19326

Mesh fabric - Placement print
Trim detail - 94% Polyester, 6% Elastane

XS - S - M - L

New silhouette Key item



Print Detail

GEA T-SHIRT

19324

Placement print - Short sleeves - 100% Cotton

S - M - L



Stone with Marble-Like Detail

MELINA DRESS

19705

Maxi dress - Strapless neckline - Front slit detail
Pull-on styling - Stone with marble-like detail
Non-slip silicone - 78% Polyamide, 22% Elastane

S - M - L

New silhouette



Cut-Out Details



Thumbhole Cut-Out

ROBIN DRESS

19312

Maxi dress - Long sleeves with thumbhole cut-out
Placement print - See-through mesh sleeves
Mesh fabric - 82% Polyester, 18% Elastane

S - M - L

Best-seller Key item



Liana Crop Top - Thumbhole Cut-Out

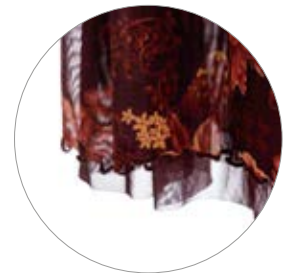
LIANA CROP TOP

19314

Allover print - Mesh fabric - Long sleeves
Trim detail - Long sleeves with thumbhole cut-out
94% Polyester, 6% Elastane

XS - S - M - L

New silhouette Key item



Brace Skirt - Mesh fabric

BRACE SKIRT

19317

Maxi skirt - Pull-on styling
Mesh fabric - Allover print - Trim detail
94% Polyester, 6% Spandex

XS - S - M - L

New silhouette Key item



ALI SHIRT

19315

Placement print - Front button closure
Short sleeves - 100% Cotton

S - M - L - XL

New silhouette Key item



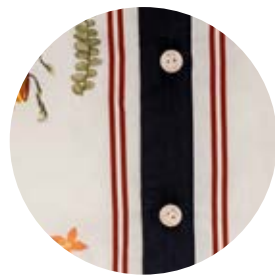
MALAGA BERMUDA SHORTS

19319

Elastic waist - Side and back pockets
Placement print - 100% Cotton - Oversized

S - M - L - XL

Key item



Ali Shirt - Button Details



Malaga Shorts - Pocket Details



KESHI SHIRT

20405

Front button closure
Embroidered patch details - 100% Cotton

XS - S - M - L

Key item



SERENA PANTS

19327

Embroidered patch details - Adjustable fit
Elastic waist - Side and back pockets
100% Cotton

S - M - L

New silhouette Key item



Keshi Shirt - Embroidered Details



Serena Pants - Back Pocket Detail



VITTORIA SHIRT

19316

Placement print - Front button closure
Short sleeves - 46% Viscose, 31% Cotton, 23% Linen

S - M - L

New silhouette Key item



SERAPHINE PANTS

19320

Cargo pockets - Side pockets - Adjustable lace
Elastic waist - Placement print - 100% Linen

S - M - L

New silhouette Key item



Vittoria Shirt - Button Details



Seraphine Pants - Adjustable lace



NAKIA HOODIE

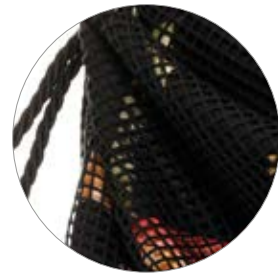
20406

Embroidered patch details - Hood
Adjustable hood lace - Front pocket
Placement print - 100% Cotton

S - M - L



Embroidered Details



Mesh Fabric Details

AIDEN BAG

19325

Pocket - Zipper - Mesh fabric - Strap details
Allover print - 100% Polyester
Measurements: 36 x 19.5 cm
U

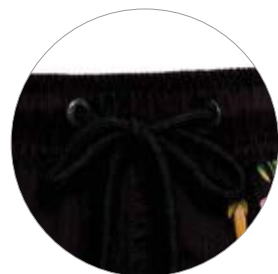


Metallic Logo

CASSIUS TRUNKS

19310

Adjustable fit - Side and back pockets
Elastic waist - Metallic Logo - Placement print
Trunk length: 16.5" / 41 cm
28 - 30 - 32 - 34 - 36 - 38



Adjustable Fit





DELIVERY #1



QUILT

This is a tribute to craftsmanship and creativity, where the art of the past finds new life in the present. A patchwork of memories, shaped by the footsteps of those who came before us.

Inspired by the tiles of old houses and the textures of layered textiles, we blend patchwork and mosaic, ancestral techniques that transform small, simple pieces into unexpected compositions of line and color.

Like Agua Bendita itself, patchwork endures through time as a testament to human ingenuity, proof of our ability to turn the ordinary into something extraordinary and artful.



LUCILLE TOP

19329

Handmade details - Removable straps
Adjustable straps - Adjustable fit - Sidewire
Front knot detail - Eco - Fabric - Placement print
Handmade details: 12 hours

S - M - L - XL

Handmade details ECO fabric
Best-seller Key item



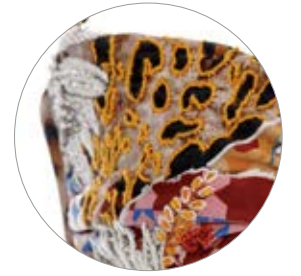
AVY BOTTOM

19330

Reversible - High-Rise - Eco-Fabric
Placement print - Coverage: Brazilian

S - M - L - XL

Reversible Best-seller Key item ECO fabric



Lucille Top - Full embroidery



Avy Bottom - Reversible



LOLITA TOP

19355

Reversible - Handmade strap details
Adjustable fit - Placement print - Eco- fabric
XS - S - M - L - XL

Handmade details ECO fabric
Reversible Best-seller Key item



ALEGRIA BOTTOM

19356

Reversible - Handmade tip details
Adjustable fit - Eco-Fabric
Placement print - Coverage: Latin
Handmade tip details: 80 minutes

XS - S - M - L - XL

Handmade details ECO fabric
Reversible Best-seller Key item



Lolita Top - Reversible



Alegria Bottom - Reversible



MADELYN TOP

19711

Handmade strap details - Adjustable straps
Underwired - Trim details - Back s-hook closure
Shimmery fabric

S - M - L - XL

Best-seller

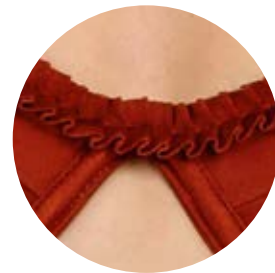


LOLA BOTTOM

19712

Shimmery fabric - Coverage: Brazilian

S - M - L - XL



Madelyn Top - Trim Details



KALI ONE PIECE

19715

Reversible - Adjustable fit - Handmade tip details
Eco- Fabric - Placement print
Coverage: Brazilian

S - M - L - XL

Handmade details ECO fabric
Reversible Best-seller Key item



Reversible



Beaded Strap Tip Details



TULIPA ONE PIECE

19331

Deep V-Cut - Open back - Adjustable straps
Placement print - Eco-Fabric - Coverage: Latin

S - M - L - XL

ECO fabric



Print Details



Adjustable Straps



ILU BOTTOM

19348

Low Rise - Reversible
Eco-Fabric - Coverage: Full

S - M - L - XL

Reversible Best-seller ECO fabric



Reversible



Print Detail



MARINE PAREO

19344

Handmade tassel details - Placement print
100% Viscose - Measurements: 64.9" x 41.3"
(165 cm x 105 cm) - Handmade tassel: 60 minutes

U

Handmade details Best-seller Key item



Tassel Details



GABRIELLA DRESS

19714

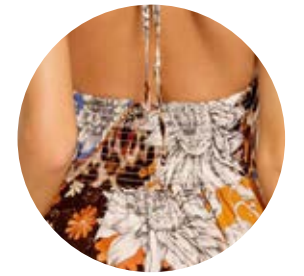
Deep V-Cut - Adjustable front knot detail
Smocked back - Adjustable straps - 100% Viscose

S - M - L

New silhouette



Front Knot Detail



Smocked Back



MEEG DRESS

19335

Maxi Dress - Adjustable straps - Cutout details
Mesh fabric - Placement print - Pull-On styling
Stone with marble-like detail - Partially lined
94% Polyester, 6% Spandex

S - M - L

New silhouette



Stone with marble-like detail



See-Through



KOSIA CROP TOP

19706

Smocked back - Structured top - 100% Viscose

S - M - L



WINTER PANTS

19707

Elastic waist - Side pockets
Adjustable lace - Handmade tip Details
94% Polyester, 6% Spandex

S - M - L

Key item



Kosia Crop Top - Smocked Back



Winter Pants - Handmade Tip Details



Button Details

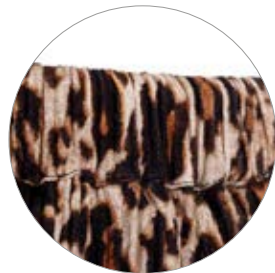
ANASTASIA SHIRT

19340

Front Button closure - Long sleeves
Placement print - Crinkled fabric
98% Cotton, 2% Elastane

XS/S - M/L

Key item



Elastic Waist

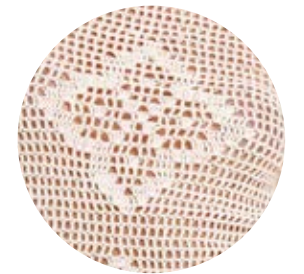
WATTS SHORTS

19346

Elastic waist - Side & back pockets
98% Cotton, 2% Elastane

XS - S - M - L

Key item



Boh Crop Top - Fabric Details



Wesley Pants - Trim Details

BOH CROP TOP

19682

Handmade - Crochet fabric - Trim details
Open back - Long bell sleeves - Sheer
Adjustable style - 100% Cotton

S - M - L

New silhouette Key item

Handmade details

WESLEY PANTS

19710

Handmade - Trim detail - Sheer - Internal panty
Crochet fabric - 100% Cotton

S - M - L

New silhouette Key item

Handmade details



Boh Crop Top - Adjustable Style



Wesley Pants - Trim Details

BOH CROP TOP

19339

Handmade - Crochet fabric - Trim details
Open back - Long bell sleeves - Sheer
Adjustable style - 100% Cotton

S - M - L

New silhouette Key item

Handmade details

WESLEY PANTS

19709

Trim Detail - Sheer - Internal panty
Crochet fabric - 100% Cotton

S - M - L

New silhouette Key item

Handmade details



AXEL SHIRT

19358

Crochet fabric
Front button closure - 100% Cotton

S - M - L

Best-seller Handmade details Key item



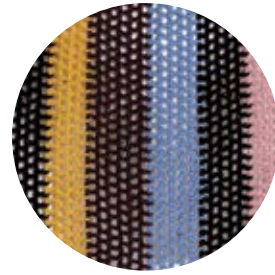
CYPRUS SKIRT

19357

Maxi Skirt - Crochet fabric - Elastic waist
Leg slit - 100% Cotton

S - M - L

Best-seller Handmade details Key item



Axel Shirt - Fabric Details



Cyprus Skirt - Leg Slit



PAPRIKA BAG

19713

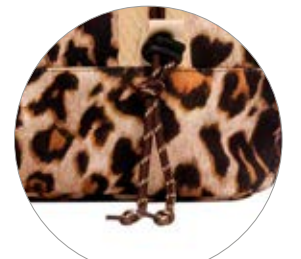
Large main compartment - Zipper closure
Dual shoulder straps - Placement print
Printed patches - 100% Polyester

U

New silhouette



Printed Patches



Lace Details



FALLON PANTS

19708

Balloon Fit - Zip Fly with button closure
Distressed details - Side & back pockets
Intentional fading & Light whiskering
100% Cotton

04 - 06 - 08 - 10

New silhouette Key item



Button Details



Distressed Details



JOE TRUNKS

19352

Elastic waist - Adjustable fit - Side & back pocket
Embroidered patch details - Metallic logo
Placement print - Trunk length: 17" / 44 cm

28 - 30 - 32 - 34 - 36 - 38

Best-seller



Metallic Logo



Back Pocket



Front Knot

CINDY ONE PIECE
19350

Front knot - Long sleeves - Cut-out details
Eco-Fabric - Placement print
02 - 04 - 06 - 08 - 10

ECO fabric



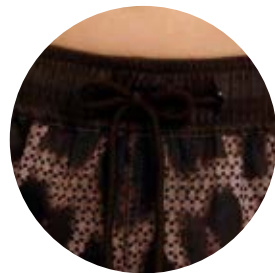
Adjustable Straps

KAIO DRESS
19342

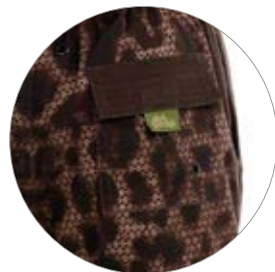
Back zipper - Adjustable straps
97% Polyester, 3% Elastane
02 - 04 - 06 - 08 - 10



Skirt Detail



Adjustable Fit



Back Pocket

NICK TRUNKS
19351

Elastic waist - Adjustable fit
Side & back pockets - Metallic logo
Embroidered patch details - Placement print
Trunk length: 13.5" / 34.5 cm
02 - 04 - 06 - 08 - 10 - 12 - 14



DOLCE BIKINI
19349

Placement print - Adjustable back
Eco-Fabric - Trim details
02 - 04 - 06 - 08 - 10 - 12 - 14

ECO fabric

AB FAMILY



KALI
ONE PIECE
19715



CINDY
ONE PIECE
19350



JOE
TRUNKS
19352



NICK
TRUNKS
19351





DELIVERY #2



FIORE

Drawing inspiration from the many forms of mosaic art throughout history, we present the Fiore drop. From Ancient Rome to the visionary works of Antoni Gaudí, mosaics have long served as a medium for storytelling, expressing ideas, symbols, and beauty through fragments.

Fiore is a mosaic of flowers, butterflies, and elements that embody the spirit of Agua Bendita. It honors ancient techniques by bringing together vibrant pieces, each one unique, yet perfectly aligned, to tell our story in a way that's both intricate and timeless.



LOLITA TOP

20532

Handmade details - Removable pads
Adjustable fit - Placement print

S - M - L - XL

Handmade details Best-seller Key item



JUDE BOTTOM

19731

Mid-rise silhouette - Strap details
Placement print - Coverage: Brazilian

S - M - L - XL

Key item



Lolita top - Fully Embroidered



Jude Bottom - Strap Details



CANDELARIA TOP

19757

Underwire - Placement print - Removable pads
Adjustable straps - Back hook-and-eye closure

S - M - L - XL

New silhouette



ALICIA BOTTOM

19732

High waist - Reversible
Placement print - Coverage: Latin

S - M - L - XL

Reversible Best-seller



Alicia Bottom - Reversible



MALORY TOP

19753

Removable pads - Back S-hook closure
Shimmery fabric

S - M - L - XL

Best-seller Key item



AVY BOTTOM

19754

Shimmery fabric - High-rise
Coverage: Brazilian

S - M - L - XL

Key item



LILY BOTTOM

21105

Waist detail - High waist
Shimmery fabric - Coverage: Latin

S - M - L - XL

Best-seller



MINNIE ONE PIECE

19734

Shimmery fabric - Adjustable straps
Cut-out detail - Coverage: Brazilian

S - M - L - XL



Shimmery Fabric



Adjustable Straps



ILU BOTTOM

19756

Low-rise - Reversible
Placement print - Coverage: Full

S - M - L - XL

Reversible Best-seller



Reversible



Print Detail



PETRA ONE PIECE

19733

Handmade details - Underwired
Back cut-out detail - Back hook-and-eye closure
Placement print - Adjustable straps
Handmade details : 330 minutes

S - M - L - XL

New silhouette



Handmade Details



Back hook-and-eye Closure



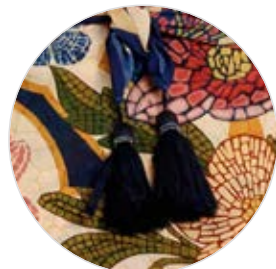
MARINE PAREO

19735

Tassel detail - Placement print - 100% Viscose
Measurements: 64.9" x 41.3" / 165 cm x 105 cm

U

Handmade details Best-seller Key item



Tassel Details



CLAVELINA TUNIC

19740

Button-up - Maxi style - Placement print
55% Viscose 45% Cotton

XS/S - M/L

New silhouette Key item



Print Details



TOCK SKIRT

19736

Ruched front with drawstring detail - Leg slit
Placement print - Handmade strap details
Lining included - 91% Polyester 9% Elastane

S - M - L

Key item



Ruched front with drawstring Detail



Fabric Details



SOLEIL SHIRT

19742

Long bell sleeves - Trim details
Machine-embroidered details - Adjustable fit
55% Viscose 45% Cotton

S - M - L

New silhouette Key item



WINTER PANTS

19743

Wide leg - Elastic waist - Side pockets
Trim details - Machine-embroidered details
55% Viscose 45% Cotton

S - M - L

Key item



Machine-embroidered Details



Trim Details



Smocked Back



Trim Details

KRISTEN DRESS

19755

Structured bodice - Smocked back - Zipper Hem detail - Pleated details - Placement print
100% Viscose

S - M - L

Best-seller



Print Detail

ALI SHIRT

19752

Short sleeves - Button-up - Placement print
46% Viscose 31% Cotton 23% Linen

S - M - L

New silhouette

Key item

WATTS SHORTS

19744

Elastic waist - Side and back pockets
Placement print - 46% Viscose 31% Cotton 23% Linen

S - M - L

Key item



Elastic Waist



Handmade Details



Trim Detail

ROSAL DRESS

19741

Handmade embroidered details - Back zipper
Puff sleeves - Smocked back - Trim details
Placement print - 46% Viscose
31% Cotton 23% Linen

S - M - L

New silhouette

Key item



Reversible

SHINNY BUCKET HAT

19738

Reversible - Machine-embroidered detail
Frayed hem - Placement print - 50% Cotton
50% Polyester

U

Reversible



Embroidered Detail



Scarf Strap Details

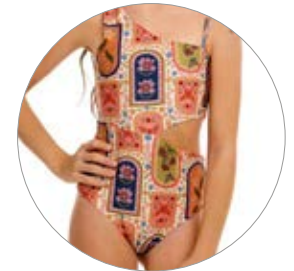


Trim Details

RANIA TOTE BAG

19737

Large main compartment - Zipper
Dual shoulder straps - Placement print
Measurements: 45 x 43 x 5 cm - 100% Polyester
U



Reversible

SAVANNA ONE PIECE

19748

Eco fabric - Asymmetric cut - Adjustable strap
Cut-out detail - Placement print
02 - 04 - 06 - 08 - 10 - 12 - 14

Reversible New silhouette



Embroidered patch detail



Elastic Waist

LIAM TRUNKS

19751

Elastic waist - Adjustable fit
Back and side pockets - Metallic logo
Placement print - Embroidered patch detail
Trunk length: 19" / 47 cm
28 - 30 - 32 - 34 - 36 - 38

Best-seller



Reversible



Smocked Back

SKY BIKINI

19749

Reversible - Smocked back
Placement print - Adjustable straps
02 - 04 - 06 - 08 - 10 - 12 - 14

Reversible



Embroidered patch detail

LACKIE RASHGUARD

19747

Reversible bottom - Long sleeves
Placement print - Embroidered patch detail

02 - 04 - 06 - 08 - 10



Smocked Top

GISELE CROP TOP

19745

Ruffle details - Adjustable straps - Smocked top
95% Polyester, 5% Elastane

04 - 06 - 08 - 10 - 12 - 14

CARA SKIRT

19746

Ruffle details - Ruched waist
95% Polyester 5% Elastane

04 - 06 - 08 - 10 - 12 - 14



Stitching Detail



Embroidered patch detail

THIAGO TRUNKS

19750

Elastic waist - Adjustable fit - Side and back pockets
Metallic logo - Embroidered patch detail
Placement print - Trunk length: 11" / 28 cm

02 - 04 - 06 - 08 - 10 - 12 - 14



Adjustable Fit



AMARANTA DRESS

19739

Maxi dress - Adjustable straps
Beaded Handmade Details: 2 hours - Zipper
82% Viscose 18% Polyamide

S - M - L

Handmade details

New silhouette

AB FAMILY



PETRA
ONE PIECE
19733



SAVANNA
ONE PIECE
19748



LIAM
TRUNKS
19751



THIAGO
TRUNKS
19750





DELIVERY #2



BATIK

At Agua Bendita, where the handmade is sacred, we honor the beauty of process, much like the ancestral batik technique, where tiny drops come together to tell a vivid visual story.

Batik is an ode to artistic creation, where imperfection becomes an ally. Through cuts, dyes, and time-honored techniques, a blank canvas is brought to life.

Shades of blue flow across a soft beige background, tracing organic lines and layering foliage in a fluid dance of craft and creativity.



LOLITA TOP

19776

Handmade details - Removable pads
Adjustable fit - Placement print

S - M - L - XL

Handmade details Best-seller Key item



ALEGRIA BOTTOM

19777

Handmade tip details - Adjustable fit
Eco-fabric - Placement print - Coverage: Latin
Handmade tip details: 2 hours

S - M - L - XL

Handmade details ECO fabric
Best-seller Key item



Lolita Top - Full embroidery



Alegria Bottom - Tip Details



LACE TOP

20519

Adjustable fit - Removable straps
Placement print - Ring details

S - M - L - XL



MAICIE BOTOM

20521

Ring details - Placement print
Coverage: Brazilian

S - M - L - XL



Lace top - Ring Detail



Maicie Bottom - Ring Detail



BRIETTA TOP
20520

Adjustable fit - Reversible - Placement print
Machine embroidered details

S - M - L - XL

Key item



WILLA BOTTOM
20522

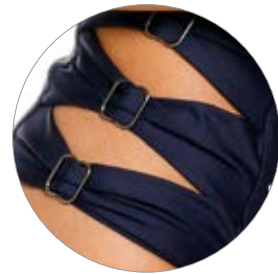
Side cut-outs - Placement print
Machine embroidered details - Coverage: Brazilian

S - M - L - XL

Key item



Lisa Top - Machine Embroidered Details



Lola Bottom - Cut-out Details



LUCA ONE PIECE
20525

Embroidered details - Adjustable straps
Placement print - Coverage: Brazilian

S - M - L - XL

New silhouette

Key item



Embroidered Details



ILU BOTTOM
20450

Low rise - Reversible
Placement print - Coverage: Full

S - M - L - XL

Reversible Best-seller



Reversible



POSH ONE PIECE
19778

Reversible - Handmade tip details
Lace-up side details - Cut-out details
Adjustable fit - Placement print - Coverage: Latin

S - M - L - XL

Handmade details

Reversible



Reversible



Tip Details



MARINE PAREO

19784

Tassel detail - Placement print - 100% Viscose
Measurements: 64.9" x 41.3" / 165 cm x 105 cm

U

Handmade details Best-seller Key item



Tassel Detail



CHRISSEY SHIRT

20531

Machine embroidered details - Front button closure
3/4 sleeves - Placement print
75% Cotton 25% Linen

XS - S - M - L

Best-seller



MALAGA SHORTS

21014

Elastic waist - Adjustable fit - Side pockets
Machine embroidered details
75% Cotton 25% Linen

S - M - L



Chrissy Shirt - Machine Embroidered Details



Malaga Shorts - Machine Embroidered Details



ELAY CROP TOP

20529

Machine embroidered details - Halter neck
Adjustable fit - Open back tie closure
55% Rayon 40% Cotton 5% Linen

S - M - L

Key item Limited Units



DANINA SKIRT

20524

Machine embroidered details
Adjustable fit - Trim detail - 55% Rayon
40% Cotton 5% Linen

S - M - L

Best-seller Key item



Elay Crop Top - Machine Embroidered Details



Danina Skirt - Machine Embroidered Details



ISOLDA BLOUSE

20528

Machine embroidered details
Front button closure - Pull-on styling
Puff sleeves - Elastic ruched hem
75% Cotton 25% Linen

S - M - L

New silhouette Key item



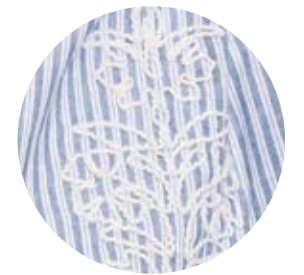
OPRAH PANTS

20527

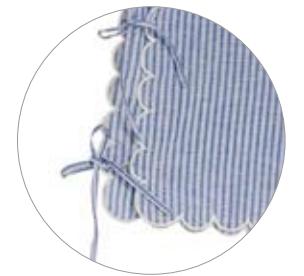
Machine embroidered details - Scallop details
Front pockets - Zipper - Adjustable lace
75% Cotton 25% Linen

S - M - L

New silhouette Key item



Isolda Blouse - Machine Embroidered Detail



Oprah Pants - Scallop Details



KESHI SHIRT

19785

Front button closure - Crinkled fabric
99% Cotton 1% Elastane

S - M - L

Key item



FRANK PANTS

19795

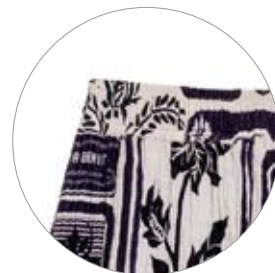
Side pockets - Elastic waist
Adjustable lace - Crinkled fabric
99% Cotton 1% Elastane

S - M - L

Key item



Keshi Shirt - Button Details



Frank Pants - Elastic Waist



AMONITA DRESS

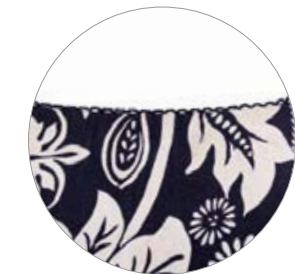
20526

Structured bodice - Smocked back - Zipper
Hem detail - Pleated details - Placement print
100% Cotton

S - M - L

New silhouette

Key item



Trim Details



ROSALIN DRESS

21013

Maxi dress - Deep V-neck
See-through - 100% Cotton

S - M - L

New silhouette

Key item



Fabric Detail



BOU TOWEL

19779

Double-sided - Placement print - Microfiber
Measurements: 56" x 37" / 142 cm x 96 cm

U





SONJA TOTE BAG

19793

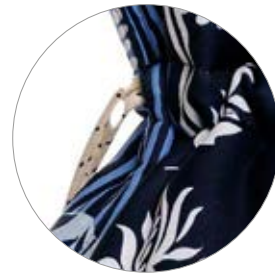
Large main compartment - Adjustable lace
Zipper - Dual shoulder straps
Embroidered patch detail - Placement print
Measurements: 50 cm x 45 cm - 100% Polyester

U

Best-seller



Embroidered patch detail



Adjustable Lace



FREDIE TRUNKS

19796

Elastic waist - Adjustable fit
Side and back pockets - Metallic logo
Placement print - Trunk length: 37.5 cm / 14.7
28 - 30 - 32 - 34 - 36 - 38



Adjustable Fit



Metallic Logo



WEEKENDER BAG

19794

Pockets - Versatile straps - Zipper
Embroidered patch detail - 100% Polyester
Measurements: 52 cm x 39 cm x 69 cm
100% Polyester

U

Key item



Embroidered patch detail



Strap Details



JOE TRUNKS

19791

Elastic waist - Adjustable fit
Side and back pockets - Placement print
Trunk length: 17" / 44 cm

28 - 30 - 32 - 34 - 36 - 38

Best-seller



Adjustable fit



JACK SHIRT
19788

Button-up - Short sleeves
Placement print - Front pocket - 100% Cotton

S - M - L - XL

Best-seller Key item



CASSIUS TRUNKS
19783

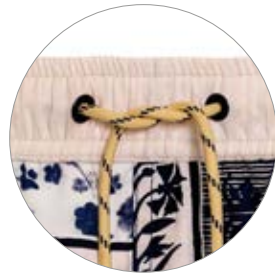
Adjustable fit - Side and back pockets
Elastic waist - Trunk length: 16.5" / 41 cm

28 - 30 - 32 - 34 - 36

Key item



Jack Shirt - Print Details



Cassius Trunks - Adjustable fit



ARON POLO SHIRT
19786

Crochet-look fabric - Machine embroidered details
100% Cotton

S - M - L

Key item



GEORGIE SHORTS
19780

Adjustable fit - Elastic waist
Side pockets - 55% Linen, 45% Rayon

28 - 30 - 32 - 34 - 36

Key item



Aron Polo Shirt - Machine Embroidered Details



Georgie Shorts - Fabric Details



JARED SHIRT
19789

Machine embroidered details
Button-up - Short sleeves
90% Cotton, 10% Polyester

XS - S - M - L

Key item



MAURY SHORTS
19782

Machine embroidered details - Adjustable fit
Elastic waist - Side pockets
Length: 43 cm / 16.9 - 90% Cotton
10% Polyester

28 - 30 - 32 - 34 - 36

Key item



Jared Shirt - Machine Embroidered Details



Maury Shorts - Machine Embroidered Details



JACK SHIRT
19787

Machine embroidered details - Button-up
Crinkled fabric - Short sleeves - Placement print
99% Cotton, 1% Elastane

S - M - L

Best-seller Key item



CECE SHORTS
19781

Machine embroidered details - Adjustable fit
Elastic waist - Side pockets - Printed brand motifs
Shorts length: 44 cm / 17.32 - 100% Cotton

28 - 30 - 32 - 34 - 36 - 38

Key item



Jack Shirt - Machine Embroidered Details



Cece Shorts - Machine Embroidered Details





DELIVERY #2



SEREIA

This drop fuses the marine world with the spirit of the Wild West, weaving a visual narrative where pearls embellish cowboy arabesques, and fish and seashells entwine with seaweed and blooms.

Earthy tones, deep blues, and pearlescent whites evoke both the dry expanse of the desert and the mysterious depths of the ocean.

It's a celebration of two seemingly distant worlds, brought together in unexpected harmony.



LOLITA TOP

19359

Handmade details - Twisted straps - Tip details
Removable pads - Adjustable fit - Placement print

S - M - L - XL

Handmade details Best-seller Key item



ALEGRIA BOTTOM

19360

Twisted straps - Tip details - Adjustable fit
Placement print - Coverage: Latin

S - M - L - XL

Best-seller Key item



Lolita top - Full embroidery



Alegria bottom - Tip Details



AYA TOP

19725

Embroidered details - Adjustable fit
Adjustable straps - Twisted straps
Back S-hook closure - Shimmery fabric

S - M - L - XL

Key item



ILU BOTTOM

19719

Embroidered details - Low rise
Shimmery fabric - Coverage: Full coverage

S - M - L - XL

Best-seller Key item



Aya top - Strap Details



Ilu bottom - Embroidered Details



DONNA TOP

19720

Handmade details - Shimmery fabric
Adjustable fit - Underwired
Back S-hook closure - Handmade details: 3 hours
XS - S - M - L - XL

Handmade details Best-seller



ELSA BOTTOM

20368

Shimmery fabric - Coverage: Latin
XS - S - M - L - XL



Donna Top - Handmade Details



Elsa Bottom - Details



MARIEL ONE PIECE

19361

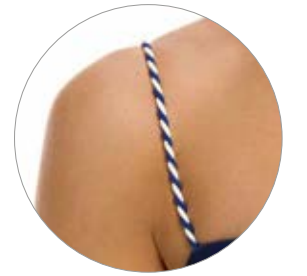
Reversible - Twisted straps
Lace-Up side details - Cut-Out details
Adjustable dstraps - Placement print
Coverage: Full coverage

S - M - L - XL

Reversible Best-seller



Reversible



Twisted straps



BELLE TOP

19721

Strap details - Adjustable fit
Fabric with metallic yarn

S - M - L - XL

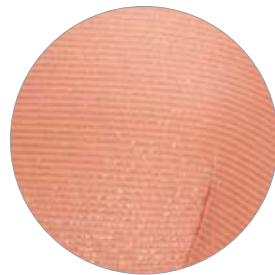


DAKOTA BOTTOM

19722

Strap details - Coverage: Brazilian
Fabric with metallic yarn

S - M - L - XL



Belle Top - Fabric Details



Dakota Bottom - Straps Details



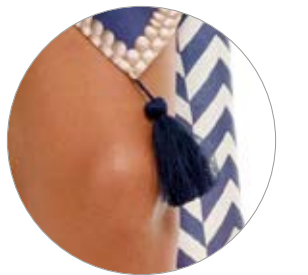
MARINE PAREO

19362

Tassel detail - Placement print - 100% Viscose
Measurements: 64.9" x 41.3" / 165 cm x 105 cm

U

Best-seller Key item



Tassel Detail



CHRISSEY SHIRT

19382

Best seller - Front pockets
Front button closure - 3/4 Sleeves
Crinkled fabric - Embroidered details
99% Cotton 1% Elastane

XS - S - M - L

Best-seller Key item



MALAGA BERMUDA SHORTS

19372

Elastic waist
Oversized fit - Side and back pockets
Machine embroidered details - Placement print
99% Cotton 1% Elastane

S - M - L

Key item



Chrissy Shirt - Buttons Details



Malaga Shorts - Print Details



SINCLAIR CROP TOP

19379

Structured bodice - Front zipper
Quilted details - Cropped - 100% Cotton

S - M - L



FALLON PANTS

19370

Balloon fit - Zip fly with button closure
Distressed details - Side and back pockets
Intentional fading and Light whiskering
100% Cotton

04 - 06 - 08 - 10

New silhouette Key item



Sinclair Crop Top - Zipper



Fallon Pants - Whiskering



MELISSA CROP TOP

19369

Handmade crochet
Adjustable fit - 100% Cotton

XS/S - M/L

Handmade details Key item



MARSHA SKIRT

19364

Handmade crochet - Adjustable lace
Trim details - 100% Cotton

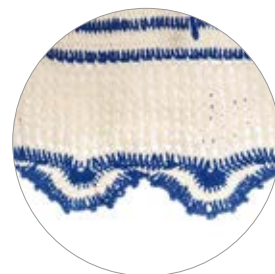
XS/S - M/L

New silhouette Key item

Handmade details



Melissa Crop Top - Fabric Details



Marsha Skirt - Trim Details



ARISTA DRESS

19388

Maxi dress - Adjustable straps
Placement print - 100% Polyester

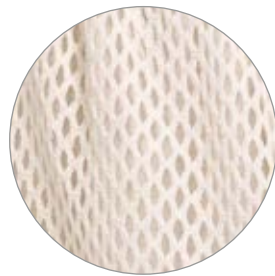
S - M - L



Adjustable Straps



Handmade Details



Fabric Details

RAYNA DRESS

19367

Midi dress - Embroidered details - Underwired
Adjustable straps - Zipper - Distressed details
Structured bodice - 46% Viscose
31% Cotton, 23% Linen

S - M - L

Handmade details New silhouette



Distressed Details



Hem Details

KRISTEN DRESS

19381

Structured bodice - Smocked back - Zipper
Hem detail - Pleated details
Distressed details - 100% Cotton

S - M - L

Best-seller Key item



Fabric Details



Trim Details

AMIRA DRESS

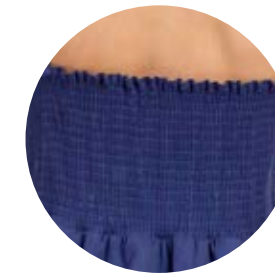
19724

Maxi dress - Machine embroidered details
See-through - No lining included - 36%Pes
32%Pa 20%Me 12%Ea

S - M - L



Embroidered Details



Smocked Back

KANE JUMPSUIT

19373

Cut-out Detail - Smocked Back - Adjustable Straps
Embroidered Details - 100% Cotton

S - M - L



CATINA CROP TOP

19368

Handmade crochet - Adjustable fit
Trim details - 100% Cotton

S - M - L

Handmade details New silhouette Key item



Handmade Details



PEACH BAG

19386

Adjustable backpack straps - Two outer zip pockets
One inner zip pocket - Drawstring styling
Measurements: 15.25" x 12.5" x 4.25
100% Polyester

U



Strap Details



Zip Pockets



CARLOTA T-SHIRT

19717

Embroidered details - 100% Cotton

S - M - L

New silhouette



Embroidered Details



Print Details

AQUA BEAUTY BAG

19387

Three outer zip pockets - Placement print
Wristlet strap - 100% Polyester
Measurements: 24.5 cm x 12 cm x 10 cm

U

New silhouette



LIAM TRUNKS

19385

Elastic waist - Adjustable fit - Back & side pockets
Metallic logo - Placement print - Embroidered
patch detail - Trunk length: 19" / 47 cm

28 - 30 - 32 - 34 - 36 - 38



Embroidered patch detail



Adjustable Fit



NOAH RASHGUARD

19383

Front zipper - Embroidered patch detail
Eco-Fabric - Placement print

02 - 04 - 06 - 08



THIAGO TRUNKS

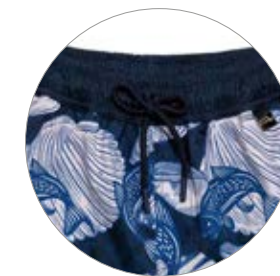
19377

Elastic waist - Adjustable fit
Side & back pockets - Metallic logo
Embroidered patch detail - Placement print
Trunk length: 11" / 28 cm

02 - 04 - 06 - 08 - 10 - 12 - 14



Noah Rashguard - Embroidered patch detail



Thiago Trunks - Adjustable Details



CARAMEL BIKINI

19374

Long sleeve - Eco-Fabric
Placement print

02 - 04 - 06 - 08 - 10



Print detail



SALMA TUNIC

19378

Tassel details - Twisted string - Placement print
Handmade twisted string - 100% Polyester

06 - 08 - 10



Tassel Details



Print Details



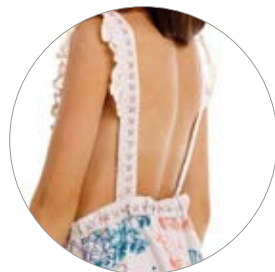
VALERY DRESS

19371

Open back - Elastic waist - Trim details
 95% Polyester, 5% Elastane
 02 - 04 - 06 - 08



Ruffle Details



Open Back



AMINA ONE PIECE

19376

Open back - Adjustable fit
 Placement print - Eco Fabric
 02 - 04 - 06 - 08 - 10 - 12 - 14

AB FAMILY



**LOLITA TOP &
 ALEGRIA BOTTOM**
 19359 / 19360



**CAMEL
 BIKINI**
 19374



**LIAM
 TRUNKS**
 19385



**THIAGO
 TRUNKS**
 19377



DELIVERY #3



AURA

This drop draws inspiration from the illustrations found in antique books, embracing a delicate, dreamlike aesthetic that transports us into a world of poetry and charm.

Fine-lined florals, reminiscent of vintage engravings, take center stage—each bloom brought to life through intricate, organic graphic treatments. Every flower, leaf, and branch is outlined with precision and touched by a soft golden halo, echoing the fire-gilded edges of ancient manuscripts and medieval illuminations.

Aura weaves together the natural and the mystical, set against softly faded backgrounds that evoke the hues of aged parchment and timeworn paper. It's a tribute to the quiet beauty of the past, where nature transforms into art through the lens of history.



LOLITA TOP

19994

Handmade Details - Removable Pads
Ruched Details - Adjustable Fit - Placement Print
S - M - L - XL

Handmade details Best-seller Key item



ALEGRÍA BOTTOM

19995

Handmade Tip Details - Ruched Details
Adjustable Fit - Placement Print - Coverage: Latin
Handmade tip details: 1 hour 20 minutes

S - M - L - XL
Handmade details Best-seller Key item



Lolita Top - Full embroidery



Alegria Bottom - Tip Details



LUPITA TOP

19996

Underwire - Back S-Hook Closure
Tie Front Closure - Handmade Tip Details
XS - S - M - L - XL

Handmade details New silhouette Key item



ELSA BOTTOM

19997

Placement Print - Coverage: Latin
XS - S - M - L - XL

Key item



Lupita Top - Handmade Tip Details



Elsa Bottom - Details



LISA TOP
20025

Adjustable Straps - Back S-Hook Closure
Removable Pads - Strap Details
Shimmery Fabric - Beaded Details

XS - S - M - L - XL

Best-seller



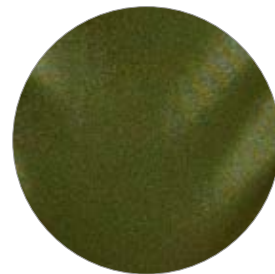
LOLA BOTTOM
20026

Shimmery Fabric - Low Rise
Coverage: Full Coverage

XS - S - M - L - XL



Lisa top - Strap Details



Lola Bottom - Shimmery Fabric



GREISA ONE PIECE
20029

Asymmetric Cut - Cut-Out Detail
Placement Print - Coverage: Latin

S - M - L - XL

New silhouette

Key item



Print Detail



Cut-Out Detail



ILU BOTTOM
20024

Low Rise - Reversible - Placement Print
Coverage: Full Coverage

S - M - L - XL

Reversible

Best-seller



Reversible



CLARA ONE PIECE
19998

Handmade Tip Detail - Open Back
Placement Print - Coverage: American

S - M - L - XL

Handmade details

Best-seller

Key item



Tip Details



Cut-Out Details

NADINE ONE PIECE

19999

Handmade tip Details - Adjustable Fit
Cut-Out Details - Coverage: Latin

S - M - L - XL

Key item Handmade details



Trim Detail

ARANXA PAREO

20002

Mesh Fabric - Placement Print
Trim Details - Front Knot Detail
94% Polyester 6%Spandex

XS/S - M/L

New silhouette Key item



Adjustable Fit

86



MARINE PAREO

20004

Handmade Tassel Detail
Placement Print - 100% Viscose
Measurements: 64.9" x 41.3" / 165 cm x 105 cm

U

Handmade details Best-seller Key item



Tassel Detail



Aida Crop Top - Fully Beaded

AIDA CROP TOP

20008

Adjustable Fit - Full Beaded - Fringed Trim

U

New silhouette Key item

Handmade details Limited Units

JANIS PANTS

20009

Elastic Waist - Adjustable Lace
Handmade Tip Details - Adjustable Fit
Side Pockets - 15% Polyamide, 85% Viscose

S - M - L

New silhouette Key item



Janis Pants - Handmade Tip Details



Handmade Details



Trim Details

SENJA CROP TOP

20027

Handmade Details - Adjustable Fit - Trim Detail
85% Viscose 15% Polyamide

S - M - L

Handmade details



Front Tie



Trim Details

SPRING DRESS

20010

Placement Print - Structured Bodice
Unpadded Underwire Cups - Front Tie
Side Zipper - Back Strap Detail - Lining
46% Viscose 31% Cotton 23% Linen

S - M - L



Chrissy Shirt - Button Details



Renata Shorts - Adjustable Waist

CHRISSY SHIRT

20011

Front Button Closure - 3/4 Sleeve
Placement Print - 46% Viscose
31% Cotton 23% Linen

XS - S - M - L

Best-seller Key item

RENATA SHORTS

20012

Adjustable Fit - Elastic Waist
Side Pockets - Placement Print
46% Viscose 31% Cotton 23% Linen

S - M - L

New silhouette Key item



Embroidered Details



Straps Trim Details

MARCIA DRESS

20007

Embroidered Details - Straps Trim Details
Smocked Back - Structured Bodice
Placement Print - Underwired
46% Viscose 31% Cotton 23% Linen

S - M - L

New silhouette Key item



Trim Details

SILVANA KIMONO
20001

Machine Embroidered
Open Front with Detachable Waist Tie
Front Slip Pockets - 46% Viscose
31% Cotton 23% Linen

XS/S - M/L

Key item



LEXI SCARF
20022

Placement Print - 100% Viscose
Measurements: 68 cm x 68 cm

U

Key item



BOU TOWEL
20005

Double-Sided - Placement Print - Microfiber
Measurement: 56" x 37" / 142 cm x 96 cm

U

Reversible



Lace Detail

ELEKTRA HAT
20003

Reversible - Adjustable Lace
Placement Print - 100% Polyester

U

Reversible Key item



Strap Details



Inside

ANNA BAG
20021

Large Main Compartment
Top Handles and Shoulder Straps - Placement Print
U

New silhouette



Embroidered patch detail

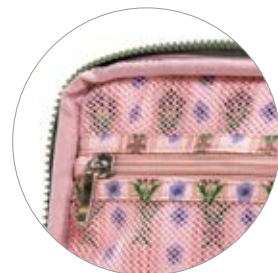


Adjustable Fit

JOE TRUNKS
20020

Elastic Waist - Adjustable Fit - Side and Back Pockets
Metallic Logo - Embroidered patch detail
Placement Print - Trunk Length: 17" / 44 cm
30 - 32 - 34 - 36 - 38

Best-seller



Inside Pocket



Print Detail

CALVIN BEAUTY BAG
20023

Zipper - Placement Print - Inside pocket
Measurements: 29 cm x 23 cm x 9 cm
U



Print Detail

LECCI ONE PIECE
20016

Placement Print
02 - 04 - 06 - 08 - 10 - 12 - 14

New silhouette



Trim Details



Print Detail

DOLCE BIKINI
20017

Placement Print - Adjustable Back
Trim Details

02 - 04 - 06 - 08 - 10 - 12 - 14



Adjustable Fit

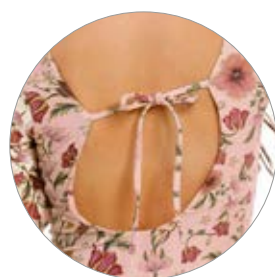


Embroidered patch detail

NICK TRUNKS
20019

Elastic Waist - Adjustable Fit
Side and Back Pockets - Metallic Logo
Embroidered patch detail - Placement Print
Trunk Length: 13.5" / 34.5 cm

02 - 04 - 06 - 08 - 10 - 12 - 14



Open Back



Print Detail

HONEY ONE PIECE
20028

Long Sleeve - Adjustable Fit - Open Back
Placement Print

02 - 04 - 06 - 08 - 10



Clarabelle Shirt - Button Details

CLARABELLE SHIRT
20365

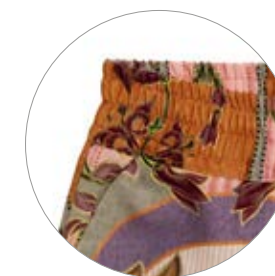
Placement Print - Front Button Closure
Short Sleeve - 100% Polyester

02 - 04 - 06 - 08 - 10 - 12 - 14 - 16

LAYA SHORTS
20534

Elastic Waist - Side Pockets
Placement Print - 100% Polyester

02 - 04 - 06 - 08 - 10 - 12 - 14 - 16



Laya Shorts - Elastic Waist



Print Detail



Fringe Detail on Trim

BRITZA PONCHO
20013

Fringe Detail on Trim - Long Sleeve
Hood - Placement Print - Terry Fabric

02 - 04 - 06 - 08 - 10

[New silhouette](#)



LAYA SHORTS
21015

Elastic Waist - Side Pockets - Placement Print
Terry Fabric - 100% Polyester

02 - 04 - 06 - 08 - 10

AB FAMILY



**CLARA
ONE PIECE**
19998



**HONEY
ONE PIECE**
20028



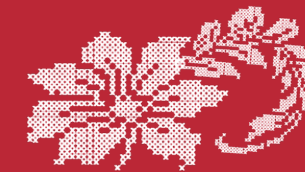
**JOE
TRUNKS**
20020



**NICK
TRUNKS**
20019



DELIVERY #3



TISSU

This group draws from the cross-stitch embroidery technique—often seen as a meditative form of artistic release.

With a palette of primary colors—red, blue, green, and black—these threads weave together time, emotion, and story into a single, meaningful piece.

At its core, this collection challenges traditional notions of masculinity. It merges sports-inspired elements with florals, stitching, and fluid silhouettes, showing how embroidery has transformed—from a symbol of constraint to a bold expression of identity. It invites a conversation about who we are, and the threads that define us.



DAN TRUNKS
20065

Elastic Waist - Adjustable Fit
Side and Back Pockets - Metallic Logo
Embroidered patch detail - Placement Print
Trunk Length: 19" / 47 cm
28 - 30 - 32 - 34 - 36 - 38



Embroidered patch detail



Back Pocket



JOE TRUNKS
20066

Elastic Waist - Adjustable Fit - Reversible
Side and Back Pockets - Metallic Logo
Placement Print - Trunk Length: 17" / 44 cm
28 - 30 - 32 - 34 - 36 - 38

Best-seller



Adjustable Fit



SATI TRUNKS

20068

Adjustable Lace – Side and Back Pockets
Metallic Logo – Placement Print
Trunk Length: 18" / 45 cm
28 - 30 - 32 - 34 - 36 - 38



Adjustable Lace



Back Pocket



JACK SHIRT

20073

Button Up – Short Sleeve – Placement Print
100% Cotton

S - M - L - XL

Key item



JOE TRUNKS

20063

Elastic Waist – Adjustable Fit
Side and Back Pockets – Metallic Logo
Placement Print – Trunk Length: 17" / 44 cm
96% Polyester 4% Elastane

28 - 30 - 32 - 34 - 36 - 38

Key item



Jack Shirt – Print Details



Joe Trunks – Adjustable Fit



COBANA SHIRT

20076

Crochet Look Fabric – Front Button Closure
100% Cotton

S - M - L

New silhouette

Key item



FREDIE TRUNKS

20064

Elastic Waist – Adjustable Fit
Embroidered patch detail – Side and Back Pockets
Metallic Logo – Placement Print
Trunk Length: 37.5 cm / 14.7

28 - 30 - 32 - 34 - 36 - 38

Key item



Cobana Shirt – Button Details



Fredie Trunks – Embroidered patch detail



ETHAN SHIRT

20084

Long Sleeve – Button Up
Machine Embroidered Details – Front Pockets
52% Lyocell 48% Cotton

S - M - L

New silhouette

Key item



MILOH SHORTS

20070

Elastic Waist – Adjustable Fit – Side and Back Pockets
Machine Embroidered Details
52% Lyocell 48% Cotton

28 - 30 - 32 - 34 - 36

New silhouette

Key item



Ethan Shirt – Front Pocket



Miloh Shorts – Machine Embroidered Details



JARED SHIRT
20082

Button Up - Short Sleeve
Crochet Look Fabric - 100% Cotton

XS - S - M - L

Key item



MAURY SHORTS
20083

Adjustable Fit - Elastic Waist - Side Pockets
Crochet Look Fabric - 100% Cotton

28 - 30 - 32 - 34 - 36

Key item



Jared Shirt - Fabric Details



Maury Shorts - Adjustable Fit



TANSY SHIRT
20074

Machine Embroidered Fabric - Allover Print
S - M - L

New silhouette

Key item

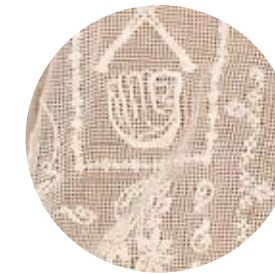


MAURY SHORTS
20072

Elastic Waist - Side Pockets Machine Embroidered Fabric

28 - 30 - 32 - 34 - 36

Key item



Edward Shirt - Fabric Details



Maury Shorts - Elastic Waist



JARED SHIRT
20071

Button Up - Short Sleeve - Allover Print
XS - S - M - L

Key item



NAVEEN PANTS
20075

Side & Back Pockets - Elastic Waist
Adjustable Lace - Machine Embroidered Details
55% Viscose 45% Cotton

28 - 30 - 32 - 34 - 36

New silhouette



Jared Shirt - Fabric Details



Naveen Pants - Machine Embroidered Details



LOLITA TOP
20060

Handmade Details - Adjustable Fit
Removable Pads - Placement Print
Handmade details: 140 minutes

S - M - L - XL

Handmade details

Best-seller

Key item



ALEGRIA BOTTOM
20061

Handmade Tip Details - Adjustable Fit
Placement Print - Coverage: Latin
Handmade details: 1 hour

S - M - L - XL

Handmade details

Best-seller

Key item



Lolita top - Handmade Details



Alegria Bottom - Handmade Tip Details



MARINE PAREO
20062

Handmade Tassel Details - Placement Print
100% Cotton
Measurements: 64.9" x 41.3" / 165 cm x 105 cm

U

Best-seller Key Item

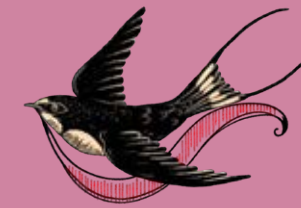


Tassel Detail





DELIVERY #3



MATCHES

This drop draws inspiration from the rich oriental iconography found on vintage matchboxes; miniature works of art steeped in history, symbolism, and echoes of bygone eras.

At Agua Bendita, as passionate collectors, we've unearthed in these matchboxes a treasure trove of untold stories and hidden narratives.

Power animals like the horse, dragon, swallow, tiger, and rooster take center stage, alongside garden muses entwined with florals and intricate textures. Together, they ignite a visual journey—one that celebrates creativity, inspiration, and the timeless beauty woven into our collective past.



LOLITA TOP

20032

Handmade Details - Eco Fabric - Adjustable Fit
Removable Pads - Placement Print
Handmade Details: 8 hours

S - M - L - XL

Handmade details Best-seller Key item



TAMMY BOTTOM

20033

Adjustable Fit - Handmade Tip Details
Eco-Fabric - Placement Print - Coverage: Latin
Handmade tip details: 1 hour 15 minutes

S - M - L - XL

Handmade details Best-seller Key item



Lolita Top - Full embroidery



Tammy Bottom - Tip Details



ISLA TOP

20059

Adjustable Fit - Reversible
Eco-Fabric - Placement Print

S - M - L - XL

New silhouette Reversible

Key item ECO fabric



PENELOPE BOTTOM

20054

High Waist - Reversible - Eco-Fabric
Placement Print - Coverage: Latin

S - M - L - XL

Reversible Best-seller Key item ECO fabric



Isla Top - Reversible



Penelope Bottom - Reversible

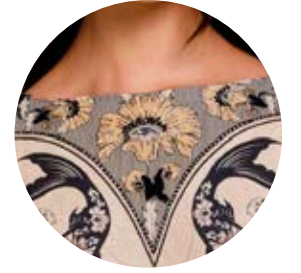


Reversible

ILU BOTTOM
20055

Low Rise - Reversible - Eco-Fabric
Placement Print - Coverage: Full Coverage
S - M - L - XL

Reversible Best-seller Key item ECO fabric

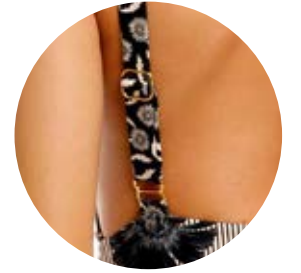


Handmade Details

DOMENICA ONE PIECE
20034

Handmade details - High Neck - Open Back
Placement Print - Coverage: Latin
Handmade details: 360 minutes
S - M - L - XL

Handmade details Best-seller Key item



Strap Details



Ring Detail

INA ONE PIECE
20053

Adjustable Straps - Front Ring Detail
Eco-Fabric - Coverage: Latin
S - M - L - XL

Best-seller



Adjustable Straps

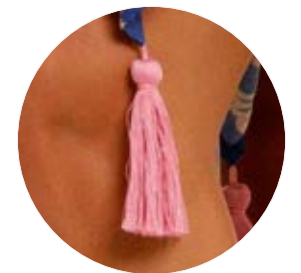


MARINE PAREO
20040

Handmade Tassel Details - Placement Print
100% Viscose - Measurements: 64.9" x 41.3" /
165 cm x 105 cm

U

Best-seller Key item



Tassel Detail



Fabric Details

KARLA PAREO
20038

Machine Embroidered Fabric
Adjustable Fit - See-Through - 100% Polyester
S - M - L

New silhouette Key item



Machine Embroidered Details

ARIADNA DRESS
20042

Maxi Dress - Adjustable Straps
Structured Bodice - Smocked Back
Zipper - Machine Embroidered Details
Fully Lined
S - M - L

Key item



Fabric Details



Hand-Knitted Fringe



Print Detail

CELINA CROP TOP
20048

Short Cuffed Sleeve
Hand-Knitted Fringe - Placement Print
96% Viscose 4% Elastane

S - M - L

Key item



Strap Details



Trim Details

LOGAN DRESS
20057

Open Back - Placement Print
Adjustable Fit - Trim Details - 100% Cotton

S - M - L



ANASTASIA SHIRT
20043

Front Button Closure – Long Sleeve
Oversized Fit – Placement Print
45% Cotton, 55% Viscose
XS/S – M/L
Key item



WINTER PANTS
20044

Elastic Waist – Side Pockets
Placement Print – 45% Cotton, 55% Viscose
S – M – L – XL
Key item



Anastasia Shirt – Print Detail



Winter Pants – Elastic Waist



BOU TOWEL
20039

Double Sided – Placement Print – Microfiber
Measurement: 56" X 37" / 142cm X 96cm
U
Reversible



CHRISTY SWEATER
20045

Knitted Fabric – Long Sleeve
Placement Print – 100% Cotton
S – M – L
Key item



JULIETTE PANTS
20046

Elastic Waist – Machine Embroidered Details
See-Through – No Undergarments Included
80% Polyester 20% Elastane
S – M – L
New silhouette **Key item**



Christy Sweater – Print Detail



Juliette Pants – Machine Embroidered Details



LUCIA TOTE BAG
20056

Machine embroidered details – Open Top
Scarf Detail– Large Main Compartment
Dual Shoulder Straps – Interior Zipper Pocket
Placement Print
U



Machine embroidered details



IBONA BEAUTY BAG
20051

Wrap-around Zipper Closure
One Main Compartment - Top Handle
U

New silhouette



Zipper



JOE TRUNKS
20035

Elastic Waist - Adjustable Fit
Side and Back Pockets - Metallic Logo
Placement Print - Trunk Length: 17" / 44cm
28 - 30 - 32 - 34 - 36 - 38

Best-seller



Adjustable Fit



Back Pocket



CALVIN BEAUTY BAG
20049

Zipper - Placement Print - Inside pocket
Measurements: 29 cm x 23 cm x 9 cm
U



Inside Details



Zipper



AXEL SHIRT
20030

Crochet fabric
Front button closure - 100% Cotton
S - M - L

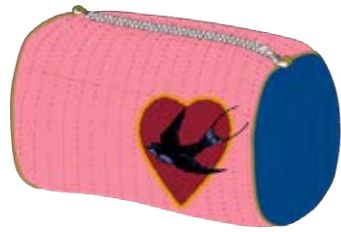
Best-seller Handmade details



CYPRUS SKIRT
20031

Maxi Skirt - Crochet fabric - Elastic waist
Leg slit - 100% Cotton
S - M - L

Best-seller Handmade details



BETZI BEAUTY BAG

20058

Medium Beauty Bag – Zipper Closure
Placement Print – Printed Brand Motifs

U



FREDA BEAUTY BAG

20050

Large Beauty Bag – Zipper Closure
Placement Print – Printed Brand Motifs

U





DELIVERY #3



THAMAR

In this collection, embroidery takes center stage as one of the most refined forms of artistic expression in the textile world. When paired with *broderie anglaise*—a technique that, centuries ago, involved hand-cutting and stitching with meticulous care—it gives rise to a series of prints that celebrate tropical flora set against rich, textured dark backgrounds.

Inspired by the timeless elegance of *broderie anglaise*, these prints showcase palm trees, flowers, leaves, and fruits in intricate reliefs and ornate arabesques, evoking the artisanal precision of a bygone era.



LOLITA TOP
20085

Handmade details - Adjustable fit - Eco-fabric
Removable pads - Placement print
S - M - L - XL

Handmade details ECO fabric
Best-seller Key item



ALEGRIA BOTTOM
20087

Handmade Tip details - Adjustable fit
Eco fabric - Placement print - Coverage: Latin
Handmade tip details: 80 minutes
S - M - L - XL

Handmade details ECO fabric
Best-seller Key item



Lolita Top - Full embroidery



Alexis Bottom - Tip Details



RUI TOP
20108

Ruffled Straps - Reversible
XS - S - M - L - XL

Reversible



ADELE BOTTOM
20109

Ruffled Straps - Reversible
Coverage: Brazilian

S - M - L - XL

Reversible



Rui Top - Reversible



Adele Bottom - Reversible



ALOE ONE PIECE

20086

Handmade details - V-cut - Adjustable straps
Eco-fabric - Placement print - Coverage: Latin

S - M - L - XL

Handmade details ECO fabric

Best-seller Key item



Handmade Details



Adjustable Straps



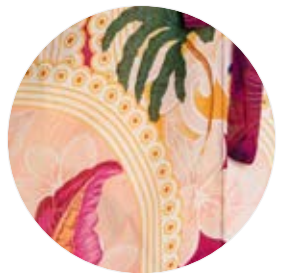
ZINNA PAREO

20089

Wrap-around - Placement print
Measurements: 120 X 87 Cm - 100% Viscose

U

Best-seller Key item



Print Details



ATZI TUNIC

20088

Mesh Fabric - See-Through

U

Key item



Fabric Detail



JOE TRUNKS

20101

Elastic waist - Adjustable fit
Side and back pockets - Metallic logo
Embroidered patch detail - Placement print
Trunk length: 17" / 44 cm
28 - 30 - 32 - 34 - 36 - 38

Best-seller Key item



Embroidered patch detail



Adjustable Fit



Reversible



Adjustable Fit

AMINA ONE PIECE
20097

Open back - Adjustable fit - Placement print
Reversible - Eco-fabric

02 - 04 - 06 - 08 - 10 - 12 - 14

Reversible ECO fabric



Noah Rashguard - Embroidered patch detail

NOAH RASHGUARD
20099

Front zipper - Eco fabric - Placement print
Embroidered patch detail

02 - 04 - 06 - 08

ECO fabric

NICK TRUNKS
20100

Elastic waist - Adjustable fit
Side and back pockets - Metallic logo
Embroidered patch detail - Placement print
Trunk length: 13.5" / 34.5 cm

02 - 04 - 06 - 08 - 10 - 12 - 14



Nick Trunks - Embroidered patch detail



Reversible

GIANNA BIKINI
20098

Placement print
Reversible - Eco-fabric

02 - 04 - 06 - 08 - 10 - 12 - 14

Reversible ECO fabric



Adjustable Fit

SAMPHA DRESS
20095

Midi dress - Adjustable fit - Placement print
95% Polyester 5% Spandex

02 - 04 - 06 - 08 - 10 - 12



Print Details



HONEY ONE PIECE
20096

Long sleeves - Adjustable fit - Eco fabric
Open back - Placement print
02 - 04 - 06 - 08 - 10

ECO fabric

AB FAMILY



**ALOE
ONE PIECE**
20086



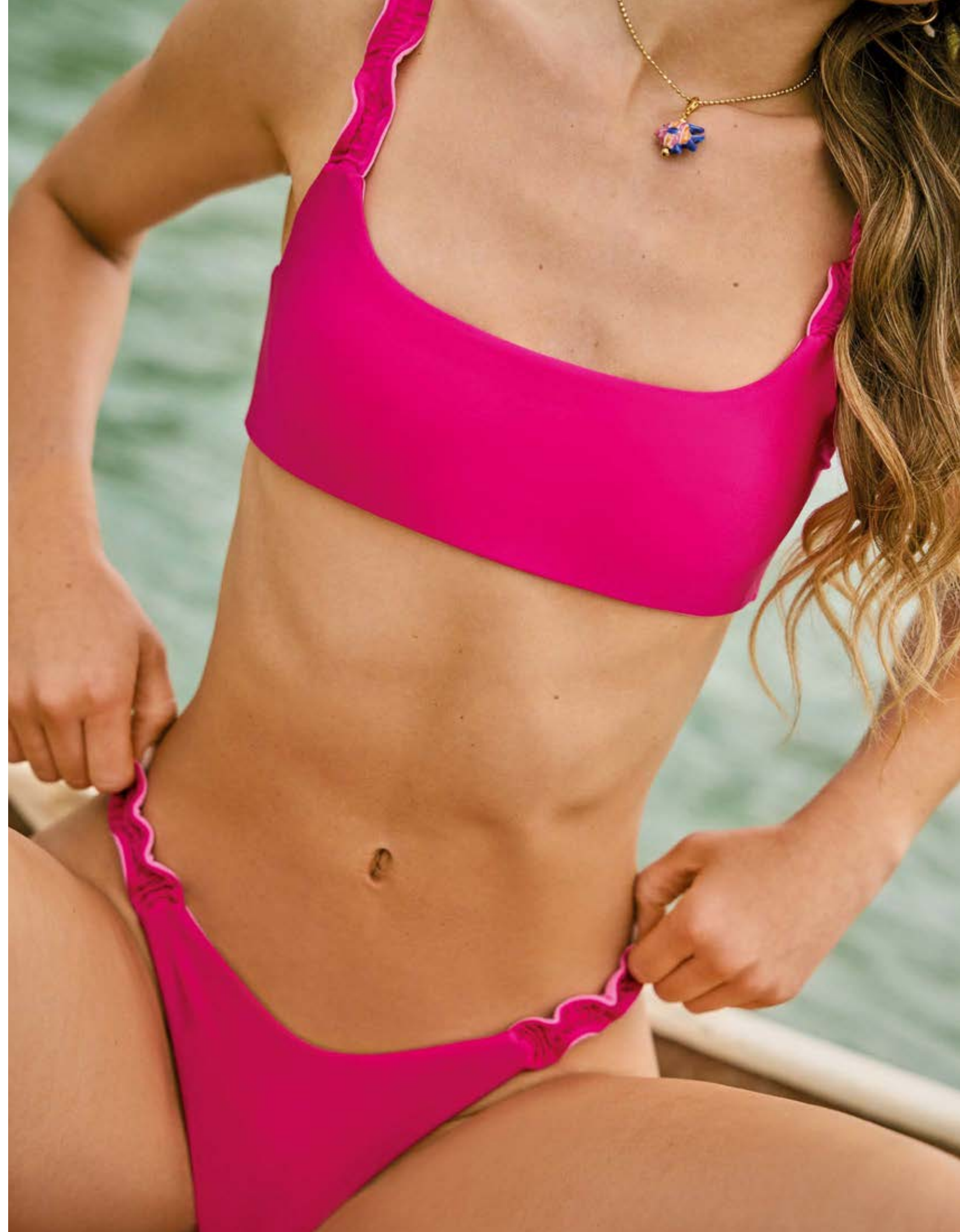
**AMINA
ONE PIECE**
20097



**JOE
TRUNKS**
20101

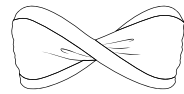


**NICK
TRUNKS**
20100



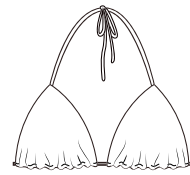
COVERAGE

TOP SILHOUETTES



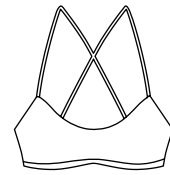
BANDEAU

A silhouette that fits perfectly to the chest.



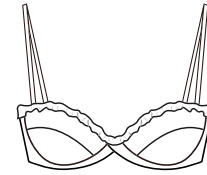
TRIANGLE

A classic silhouette perfect for tanning, with adjustable straps.



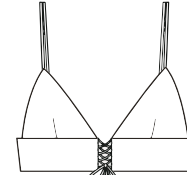
SPORT

A more fitted silhouette for better comfort.



UNDERWIRE

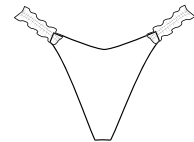
Silhouettes that have an underwire for more support.



BRALETTE

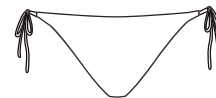
Wireless design that offers comfortable support

BOTTOM COVERAGE



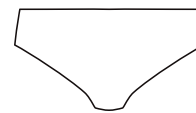
BRAZILIAN

Our lowest coverage, perfect for getting a tan.



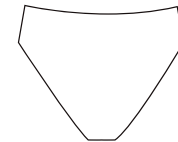
LATIN

Our medium coverage; provides comfort and security, but at the same time, it shows more skin.



AMERICAN

A mainly high/medium coverage.



FULL COVERAGE

Our silhouette with the highest coverage.

KEY WORDS

Handmade details

Pieces that are hand-embroidered by our #ABhearts.

New silhouette

Pieces that feature new never-seen-before cuts and styles.

Plus Size

Pieces that have a wide range of sizes, going up to 3XL, to fit every body.

Reversible

Pieces that have 2 prints and can be worn either way.

Best-seller

Pieces that our commercial team forecast to have a great selling rate

Key item

Pieces that appeal to fashion trends and so are key for upcoming seasons and new markets.

ECO fabric

Pieces made with recycled polyester

Limited Units

Pieces produced in small, exclusive quantities that won't be restocked once sold out.

North American Sales

Maria Adelaida Munera
mmunera@aguabendita.com.co

US Boutiques Relationship Manager

Maria Zapata
mazapata@aguabendita.com.co

International & Franchises Sales

Juliana Restrepo
jrchica@aguabendita.com.co

Aguabendita.com | @Aguabenditasw

